

TEMPLE EMANU-EL
RELIGIOUS SCHOOL
STUDENT NEWSPAPER
2015-2016

TABLE OF CONTENTS

2 AN INTERVIEW OF AN A-TEAMER ETHAN GELFER *By Naomi Gelfer*

3 INTERVIEW WITH MARK HEUTLINGER *By Jeremy Hartman-Chait*

4 TZEDAKAH *By Emmy Paletz*

5 PHOTOGRAPHY *By Jack Swiger*

6 SCHOOL EVENTS *By Jack Swiger* SHARSHERET RESEARCH *By David Lilien*

7 CROSSWORD PUZZLE *By Zac Snyder*

8 SCHOOL EVENTS *By Nathaniel Helpern*

9-10 MAZES *By Gordon Beckler*

11 WORD SEARCH *By Brady Propper*

12 SAUL KAISERMAN INTERVIEW *By Benjamin Novak*

13 OUR FAVORITE JEWISH HOLIDAYS *By Phebe Barnett*

14 TZEDAKAH *By Annie Kagan*

15 INTERVIEW WITH RABBI TICK BRILL *By Aislinn Moloney*

16 SHABBAT KODESH DEVAR TORAH *By Michael Raye Reiss*

17 SHABBAT KODESH DEVAR TORAH *By Mark Fischer*

18 ORIGINAL ARTWORK *By Bennet Kulla*

19-21 PHOTOGRAPHY *By Sloane Wachs*

Dear Temple Emanu-El Families,

It is a delight to present you with The Prophet's Voice,
the annual publication of the religious school of Congregation Emanu-El.
Inside you will find interviews, articles, and artwork done within the classroom.

This publication is largely the work of our Student Council.

The students of the Council, who volunteered to serve, meet throughout the year on a monthly basis (at 9:00am on Sunday mornings.) They decide upon the recipients of our school's tzedakah collection, learn about representing their peers, and discuss important issues within the school. All students in grades four and above are eligible to serve on the Student Council, representing their classmates in these important decisions. The submissions to The Prophet's Voice include not only the Student Council members, but students from every grade in the school. We are so proud of all of our students.

Enjoy this issue of The Prophet's Voice!

Saul Kaiserman
Director of Lifelong Learning

Rabbi Allison Tick Brill
Assistant Rabbi

It is an honor and a privilege to have worked with Temple Emanu-El's Student Council this year in creating this annual student newspaper, among the other projects we have taken on.

The 2015-2016 Student Council was comprised of:

Aislinn Moloney	Gordon Beckler
Annie Kagan	Haley Melniker
Avery Goldstein	Jack Swiger
Ayla Faitelson	Jeremy Hartman-Chait
Ben Novak	Mena Solomon
Bennett Kulla	Naomi Gelfer
Blythe Breitman	Nathaniel Helpern
Brady Propper	Phebe Barnett
Charlotte Lipman	Ryan Katz
David Lilien	Seth Abeles
Davide Murillo	Sloane Wachs
Dylan Baer	Zac Snyder
Emmy Paletz	

AN INTERVIEW OF AN A-TEAMER ETHAN GELFER

BY NAOMI GELFER

NAOMI: What do you do in religious school? What is your day like?

ETHAN: I come to religious school at around 9:00AM and I go to the office to sign in. In the morning I deliver snack, file notes, and work on new bulletin boards for the students. Normally I work with Ms. French and the third graders. I also count tzedakah. I am also a tribal chief so I have to work with my tribe (the sarahites).

NAOMI: How many years have you been a member of the Temple Emanu-El religious school?

ETHAN: I started in 6th grade and I am in 12th grade now, so I have been here for seven years.

NAOMI: What is your favorite moment in religious school?

ETHAN: 6th grade history with Mr. Willner - we had lots of fun and I learned many new things that I did not even know about! For example, I learned that the country with the second most patients per capita is Israel! People from Israel invented the GPS!

NAOMI: What is your day like as a tribal chief?

ETHAN: 10:45-12:00 I work as a tribal chief. Before tribes all of the tribal chiefs have a meeting with Missy and/or Rachel. We discuss what will the next lesson be about, sometimes we work on posters and set up the room for the lesson.

NAOMI: Try to name all of the teachers that you have had throughout religious school.

ETHAN: Well, I had Mr. Willner, Bella (I don't remember her last name) Mr. Mishkin for mitzvah corps, Shayna (I don't remember her last name either) and then I had Missy and Rachel for A-Team.

NAOMI: Who do you think was your coolest teacher?

ETHAN: Mr. Mishkin, he was really fun!

NAOMI: If you could, what would you change about Temple Emanu-El's religious school?

ETHAN: I would try to improve the student connection to the religious school so that the children would not just be at temple once a week.

NAOMI: What do you like to do in your free time?

ETHAN: I like to read the news. I also really like to spend time with my friends.

NAOMI: What is your favorite book?

ETHAN: The Fixer by: Bernard Malamud

NAOMI: What is your favorite movie?

ETHAN: Good Will Hunting

NAOMI: What is next for you (next year)?

ETHAN: I'm off to college, I will be attending the University of Chicago. In the summer I want to intern at a non-profit. I also want to see what I can do in Chicago, maybe even try to make a difference!

NAOMI: Well, thank you very much for coming to my interview and have a nice day!

ETHAN: Thank you very much and have a very nice day!



INTERVIEW WITH MARK HEUTLINGER

BY JEREMY HARTMAN-CHAIT

I chose to interview Mark Heutlinger the Administrator of Temple Emanu-El. I have known Mark all of my life because in addition to his role at temple, he is a good friend of my parents. He is a vital member of our community.

1. What brought you to Temple Emanu-El?

I had been working in the Jewish community for the rescue of Jews in the Soviet Union and once that was accomplished in 1989, I was approached by the Temple to see if I would take a position. Since the rescue mission was over, I decided to take the position as the Temple Administrator.

2. What does your job involve?

It involves a lot of different moving parts that need to be managed and oiled so that they run smoothly and seamlessly. It all revolves around our schedule for every week. Each week we decide what we're doing and then we plan what we are doing the following week.

3. Have you met any famous people?

Well yes, those people that attend our Religious School and our Shabbat Services. I also consider famous, the people of the Tikkun Olam Committee, that help repair the world.

4. What are your most memorable experiences at Temple Emanu-El?

We once had the Dalai Lama come to visit Temple Emanu-El. He came for the Fortieth Anniversary of the Tibetan Exile and he came to ask Dr. Sobel what it was like for people living in the Diaspora, in areas other than in their homeland, how they survived. It was very important to him in terms of his people surviving in exile from Tibet. When he visited Temple Emanu-El, there were literally thousands and thousands of people here. I've never seen the Temple with more people than when the Dalai Lama visited.

Mark Heutlinger does so much for the Temple that goes unseen, I wanted to interview him so that I could recognize him for his countless contributions to the Emanu-El Community and so more Religious School students and families could know what he does. It was an honor to visit with him for our interview.



TZEDAKAH

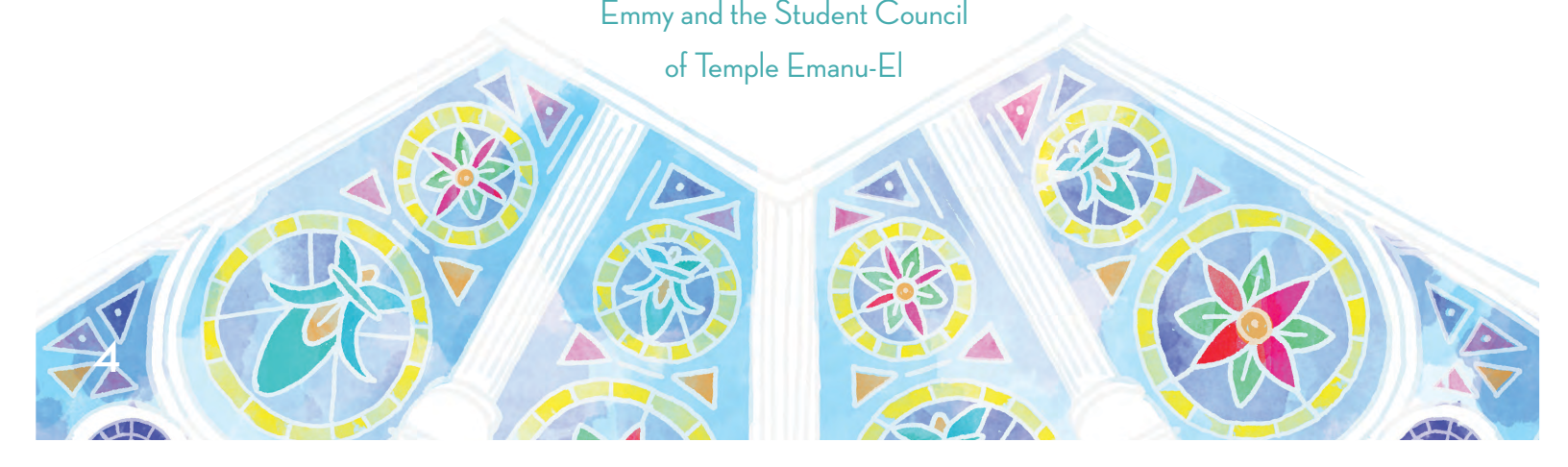
BY EMMY PALETZ

Over the years, Temple Emanu-El has been raising tzedakah for different recipients and this year was no different. One of the charities which we gave tzedakah to was the International Rescue Committee. We raised \$1,121.52 for this charity and, hopefully, helped them to expand their ability to help their people.

The International Rescue Committee (the IRC) responds to the world's worst humanitarian crises and helps people to survive and rebuild their lives. They do this across forty countries and in twenty-six US cities. Their help restores safety and hope to the refugees. The IRC delivers life saving care for those who are fleeing conflict and natural disasters. Its founder, Albert Einstein, an intelligent man who came up with the solution to pi, put in much effort and money to this charity that helps people in need.

Temple Emanu-El contributed a lot of money to this organization and will continue to follow in Albert Einstein's footsteps through tzedakah. We started collecting for this cause in the middle of our school year. Each person in the Hebrew school at Temple Emanu-El contributed by bringing in what they could, even if it was as little as a dollar. With all the support and help, we were able to successfully raise a large amount of money to donate. We all appreciate the support of every person and their donations. Without you, we could not have gotten to where we are now.

Thank you,
Emmy and the Student Council
of Temple Emanu-El



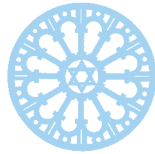


PHOTOGRAPHY
BY JACK SWIGER

SCHOOL EVENTS

BY JACK SWIGER

The Temple organized many great school events this year. Some of the special events were the Tribal Color War and the Purim Carnival. This year the theme for the Purim Carnival was Shushan Wars, based on Star Wars. The carnival celebrated Queen Esther for her bravery confronting Haman and saving the Jews. The carnival had fun games, like make your own homentoshens, a Star Wars video game, a picture booth, pin the tale on Yoda, and a karaoke booth. There was also a booth run by the student council where people made get well cards for Jewish people with cancer. The carnival also had great food and a play at the beginning that was made by the staff. Some people dress up. The Purim Carnival was a great event.



SHARSHERET RESEARCH

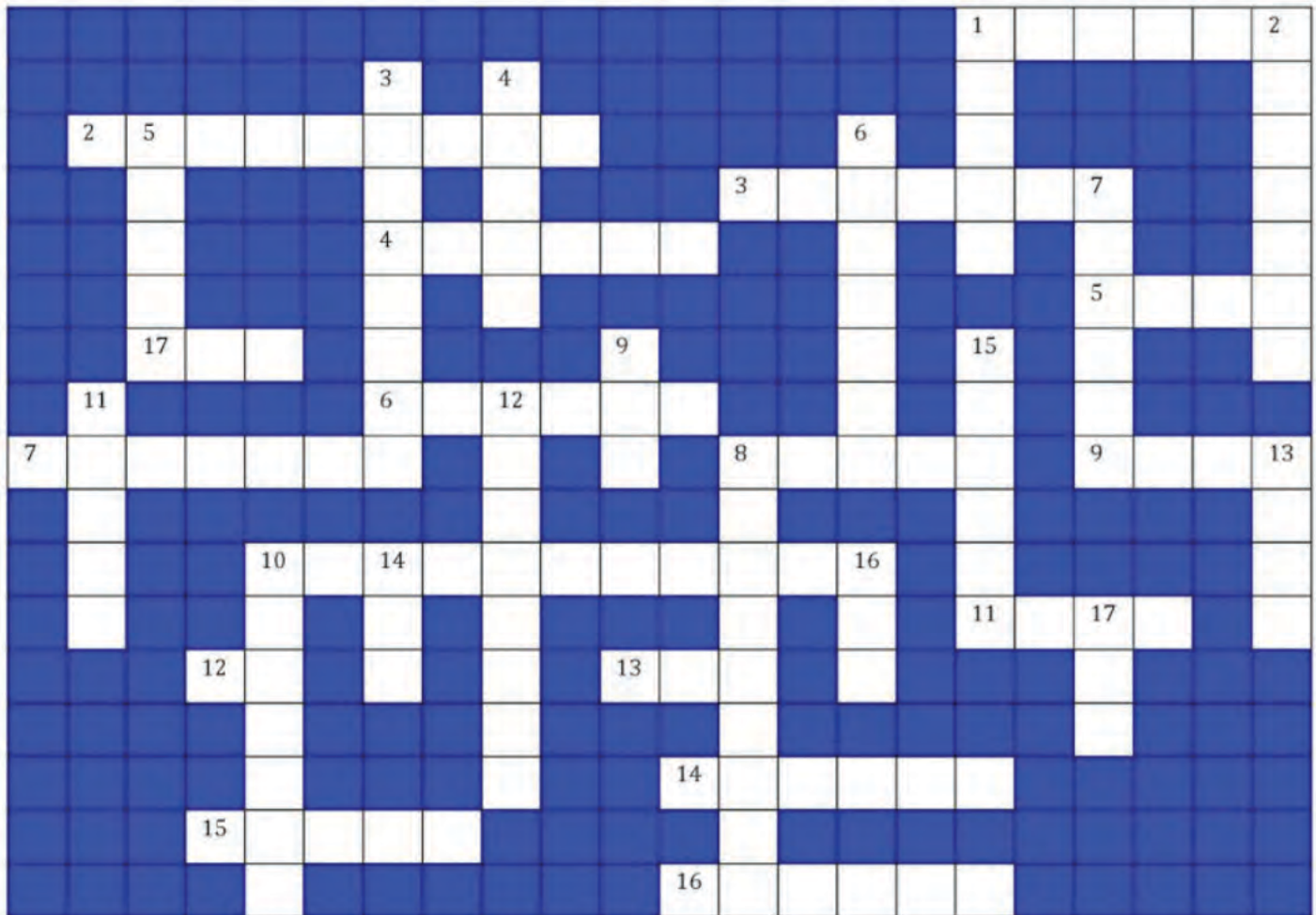
BY DAVID LILIEN

Sharsheret, Hebrew for “chain,” is a national not for profit organization supporting young women and their families, of all Jewish backgrounds, facing breast cancer. Our mission is to offer a community of support to women diagnosed with breast cancer or at increased genetic risk, by fostering culturally relevant individualized connections with networks of peers, health professionals, and related resources.

Since Sharsheret’s founding in 2001, we have responded to more than 45,000 breast cancer inquiries, involved more than 4,000 peer supporters, and presented over 250 educational programs nationwide. Sharsheret supports young Jewish women and families facing breast cancer at every stage—before, during, and after diagnosis. We help women and families connect to our community in the way that feels most comfortable, taking into consideration their stage of life, diagnosis, or treatment, as well as their connection to Judaism. We also provide educational resources, offer specialized support to those facing ovarian cancer or at high risk of developing cancer, and create programs for women and families to improve their quality of life. All Sharsheret’s programs are open to all women and men.

CROSSWORD PUZZLE

BY ZAC SNYDER



ACROSS

1. Hebrew word for "peace", "hello" and "good bye"
2. City where the Western Wall is located
3. Giant that David fought
4. What Joseph interprets
5. Raised platform where the Torah is read
6. Something we eat on Rosh Hashanah
7. Who treated the Jews poorly in Egypt
8. He parted the Red Sea
9. What is the Kiddush blessing for?
10. Queen Esther's king
11. First man
12. City where Abraham was born
13. First woman
14. What we blow on Rosh Hashanah
15. Large coastal Israeli city
16. A plant species in the lulav
17. Number of plagues God cast down on the Egyptians

DOWN

1. Where Moses received the Ten Commandments
2. Good deed
3. Ceremony at the conclusion of Shabbat
4. Desert in Southern Israel
5. Number of nights of Chanukah
6. Punishment God inflicted on Egypt
7. Language spoken in Israel
8. Queen Esther's cousin
9. Second letter of the Hebrew alphabet
10. Isaac's father
11. Number of Jars of oil the Macabees had
12. Holiday when the youngest child recites the 4 Questions
13. Israeli national airline
14. Sixth letter of the Hebrew alphabet
15. He led the Israelites into the Promised Land
16. Number of points on the Star of David
17. What Noah built to survive the flood

SCHOOL EVENTS

BY NATHANIEL HELPERN

There are many things that go on in Temple Emanu-El like services, events, dinners, tribes, and more. First we have services. Family services can happen in the morning and in the night. Shabbat Kodesh is on Fridays. There are a lot of songs, Torah, and, of course, skits. Shabbat Kodesh happens in the BethEl chapel, next to the main sanctuary. Most of the songs we learned in tefila in religious school. During family services for holidays there are songs we sing, blessings we say, and instruments we hear. In the family services we have music, the junior choir, and the rabbis. Some of the things that have happened in these services are rolling out the Torah for Simchat Torah and lighting the candles for Hanukkah.

Now we move into events. Mitzvah Day is an event where you make bags for the hungry, poor, and homeless. There is a mitzvah blessing that we do. A mitzvah is when you do something nice for someone. The junior choir sang as part of their mitzvah. Now we go into another event for Purim. Boo Haman. There was a show performed by the junior choir, the rabbis, teachers, and other people who work at Temple Emanu-El. After we had a big carnival with fun games, video games, prizes, candy, cakes, snacks, and a whole lot more.

Tribes is a period in Hebrew School. We learn from our ATeem, who teach us a lot about history. It is really fun. Tribe wars happen during the winter where all tribes compete in a battle to try to win all the games as a group.

We also raised money for Sharsheret. Sharsheret is a charity that helps young Jewish women with breast cancer and their families. It helps with support and education. It is a place where women who are sick can go for information. We are eager to give money to this charity.

As you can see, there are a lot of fun activities
that happened during the school year.

MAZES

BY GORDON BECKLER

HELP RABBI TICK BRILL FIND THE TORAH



HELP THE KIDS FIND THE TEMPLE



WORD SEARCH

BY BRADY PROPPER

Jewish Word Search

N N X U H O Z T A M P L Z J J
E M E X J M I J Q Z G K E R E
R I H A K K U N A H H O M R R
K E G S T A R O F D A V I D U
C O V H Z J B R L B R B R T S
Q L S O T G D T A S O B U I A
Q R J H S D W Y T K N S P M L
T O R T E S A M K B E E F B E
E S T H E R A Y E E M O Z B M
H X C S R B C P S I E W B V T

Eight days
Esther
Hanukkah
Jerusalem
kosher
latkes



matzoh
menorah
Passover
Purim
Star of David
torte



SAUL KAISERMAN INTERVIEW BY BENJAMIN NOVAK

For my interview I decided to interview Saul Kaiserman because he works with us so much. I chose four very important questions to ask him.

1. What made you want to study or contribute to Jewish studies?

He said truthfully he hated Hebrew School when he was a kid and thought it was boring and pointless. Then, he was in a youth group as a teenager and discovered that there were so many interesting and fun things you could do when learning about Judaism. He wanted to make sure that all kids had a great time at Religious School and learn important things about life.

2. Why did you come to Temple Emanu-El?

When he interviewed for the position at Emanu-El, he saw that people there were asking the same questions about Judaism that he asked himself. He knew he wanted to be together with such terrific question askers!

3. Why did you choose to work with children?

He used to babysit when he was a teenager and he always liked working with kids. It actually took him more time to learn to like working with adults. He used to think that all grownups were hypocrites, but now he knows that it is pretty hard taking on adult responsibilities.

4. What is your favorite thing about your job?

He has so many favorite things! He loves hearing the ideas that kids share about the prayers in tefilah, He loves seeing the ATEEM leading activities for the younger kids, He loves seeing parents volunteering at Mitzvah Day and the Purim Carnival.

He can't imagine a job he would love more than this one!



OUR FAVORITE JEWISH HOLIDAYS

BY PHEBE BARNETT

The Jewish Holidays at Temple Emanu-El are special times that we come together as a community and share traditions. My favorite holidays are Rosh Hashanah, Hanukkah and Passover. I always look forward to the start of the new year, Rosh Hashanah, to reflect on the past year and set new goals for the year ahead. I love dipping apples in honey as the tradition of bringing sweetness in the year to come.

Hanukkah, the holiday that centers around the miracle of oil, is filled with happiness and celebration. The lighting of the menorah, the spinning of the dreidel and the wonderful fried foods of potato latkes and sufganiyan; jelly donuts. Hanukkah is not about getting presents but the celebration of the miracle of light.

Passover is important as we acknowledge the freedom of our ancestors escaping slavery. It makes me appreciate the freedom we have today.

Each holiday is special to me for their important history that we acknowledge and the celebrations we share. I was curious to learn which Jewish holidays are the “most favorite and why” among some of our community at Temple Emanu-El:

Joshua Davidson, Senior Rabbi

"Passover is my favorite holiday. I love it because we sit together with family and friends sharing a delicious meal filled with singing. And I love it because we tell the story of our people's exodus from Egypt, and talk about how that story should inspire us to help everyone in the world still enslaved to things like poverty, war, and hunger."

Saul Kaiserman, Director of Lifelong Learning

"My favorite Jewish holiday is Passover. When I was in college, a group of my friends and I started holding the second night seder on our own. We mostly ate our parents' leftovers from the first seder, and we only had one rule: No parents. Believe it or not, we are still getting together every year for the second seder, more than 30 years later. And since most of us are now parents, now we have no rules. But I also love Passover because I love 7layer cake and the only time I ever eat it is at the seder."

Rachel Brumberg, Associate Director of Lifelong Learning

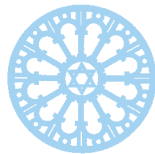
"I love all of the traditions that are associated with Passover. It's not an easy holiday: there's a lot of cleaning, prepping and work that goes into it. But to me that gives the greatest reward. I love all of the traditions associated with Passover. From gathering together as a family for the Seder (and yes, telling the same jokes year after year) to all of the special foods that we only eat once a year. Many people say that there is nothing to eat on Passover since you can't have bread or other leavened products. I think

that there is TOO much to eat and have a hard time fitting it all into one week. I love to invite friends over to my superclean home (spring cleaning at its finest!) and feed them. Some of the foods I love to cook on Passover are spinach matzo lasagna, chocolate chip bars, potato kugel and a special haroset from Suriname that my mother used to make.”

Rina Moscovitz, 4th grade History and Hebrew Teacher

“My favorite holiday is Hanukkah. For me Hanukkah encompasses many meanings and stands for a number of meaningful ideas. The word Hanukkah in Hebrew means dedication, originally it was “Rededicating” the Holy Temple in Jerusalem after winning the three year battle against the Syrian Greeks. The larger meaning of Dedication represents our dedication to Jewish values and the Jewish way of life. Hanukkah for me stands for the freedom to practice and live by our Jewish values as a choice, freely, anywhere in the world. Lighting the candles for eight nights celebrates the light overcoming the darkness. Celebrating the spirit of our values, determination, optimism and the good over evil. Hanukkah also stands for miracles and wonders, the salvation and the many battles we overcame throughout our long history. I love the concept of “Pirsoom HaNes” the freedom and pride we show commemorating the miracle of Hanukkah by lighting our Hanukkiah placing it on our windowsills for all to see.”

I love all of the Jewish Holidays because this is the time that we can acknowledge our heritage. It is the time that we join together as family and reflect on who we are what we are and where we want to be.



TZEDAKAH

BY ANNIE KAGAN

The first tzedakah recipient this year, as in the past, was New York Common Pantry. New York Common Pantry is the largest food pantry in New York City, and it serves people from all five boroughs of New York. The people who benefit from New York Common Pantry are people who have less money and need help getting fresh food. In addition to distributing fresh food to those in need, New York Common Pantry also provides meals, clean showers, laundry services, mail delivery and psychiatry services. This year the Temple Emanu-El Religious School raised \$1,446.95 dollars to be donated to New York Common Pantry!



INTERVIEW WITH RABBI TICK BRILL

BY AISLINN MOLONEY

For this past year in Hebrew School, I've had the opportunity to work with Rabbi Tick Brill on student council. Some Temple Emanu-El students might have not had the chance to get to know her, but she is quite a cool person and a lot of fun to talk to. I asked her some questions to maybe help everyone get to know her a little bit better.

Why did you decide to work at Temple Emanu-El?

I wanted to work at Temple Emanu-El because of the fantastic community of congregants and staff that make this place so special! I lived in New York for five years before joining the temple and I always admired Temple Emanu-El. When I started in July, I realized that while the building is magnificent, the people inside are even more magnificent!

What is your favorite Jewish Holiday?

Hanukkah is one of my favorite Jewish holidays. I love lighting the menorah. It reminds me that we can all bring light into the world. Any holiday I can spend with my family makes me happy!

What is your favorite thing about Temple Emanu-El?

One of my favorite things about Temple Emanu-El is the view of the sanctuary from the bima. Come sit in the chairs on the bima and check it out!

What was Hebrew school like for you as a kid?

I grew up in Chicago and loved going to Hebrew school. I had many friends in class and the rabbis were very friendly and fun. We used to have apple juice and challah for snack. The challah was so eggy, sometimes you would find an entire yolk on the bottom of the loaf. Attending youth group events was the highlight!

I'm so glad I joined student Council and got to work with and get to know Rabbi Tick Brill.

I hope you see how great a person she is.



SHABBAT KODESH DEVAR TORAH

BY MICHAEL RAYE REISS

This week our Torah portion comes from Metzora, part of Leviticus. Leviticus details laws and instructions to help guide our lives. Some of these laws are practical, some are ethical, and some seem to have no connection to 2016 at all. So I'd like to add one of my own: People **MUST** value the communities that they are a part of and take action to strengthen what already exists. I am so proud to be a member of Temple Emanu-El and to be part of a community that has become an integral part of my teen years growing up in NYC. I feel as though Emanu-El has provided me with a second home, somewhere that I can always feel safe and secure. Similar to Mark, I thought my days of attending temple were over after my BatMitzvah, but I was pleasantly surprised by the joy that was brought to my life from Emanu-El. Upon entering high school, I decided to attend a few of the youth group programs that Emanu-El so graciously offers. With the Teen Youth Group, I helped out in soup kitchens, packaged and delivered food to the homeless, participated in the cleaning and refurbishing of a garden, and much more. I instantly realized how amazing these groups were and how much of an impact I could have on the community inside and outside of the temple.

A strong community means a lot to me. To be able to not only be a part of a community at school, but also to be a part of a community at my temple is something that is very special to me. The Emanu-El community provides me with a feeling of warmth and security. Being part of the youth groups at Emanu-El, I have had the opportunity to meet many students who have similar interests as me. The strong bonds that Emanu-El fosters have allowed me to maintain my friendships outside of Emanu-El as well.

As copresident of the Teen Youth Group and board member of the Teen Philanthropic Committee, I can absolutely say that Emanu-El has made an enormous positive impact on my life and I am so lucky to have the privilege to be a part of such an incredible organization.

SHABBAT KODESH DEVAR TORAH

BY MARK FISCHER

To me, Judaism is about tradition. The Jewish tradition involves passing down not only values and lessons from the Torah, but a responsibility in the Jewish community. We all know the tradition of becoming a bar or bat mitzvah to be one of the most cherished. This is because it is symbolic of a child becoming an adult in the eyes of the community. With their new heightened status, that boy or girl is expected to be a contributing member.

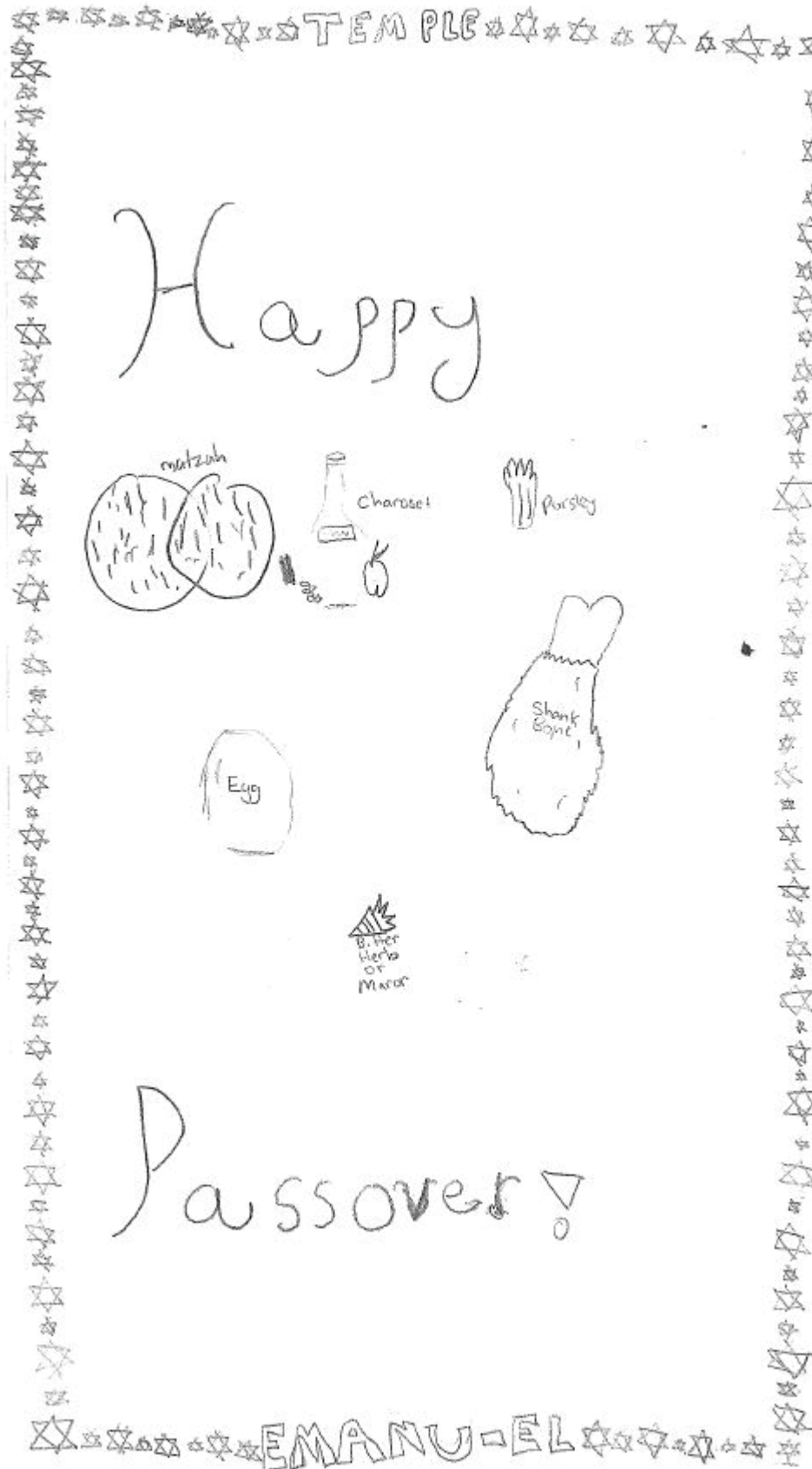
As a lifelong member, contributing to the Emanu-El community it was always expected of me. Whether it was attending totShabbats, Hebrew school, and eventually studying for my barmitzvah, it seemed like I was always here for something. When I was younger, I would ask why I was here so often. I remember when I was in 8th grade and my brother was in 9th grade, he joined the Emanu-El Senior Youth Group, and AJWS benefit board. This was surprising to me because I thought that my involvement after my barmitzvah was over, but once I entered high school my mom and my brother insisted that I join as well. I was reluctant when I attended my first meetings, but that quickly changed. Over the next few years, working with these groups I found that I genuinely enjoy being a part of them. Each month I have come to meetings and seen friends who I often do not see and eaten great food. We often talk and laugh but we also accomplish many great things. I can say that I have helped raise thousands of dollars for global causes through AJWS, planned social and community service events for Emanu-El teens, and in the past two years on ATEEM set a positive example for some of Emanu-El's youngest members to take on leadership roles one day. This is all because I have come to understand the power of being a contributing member to the community.

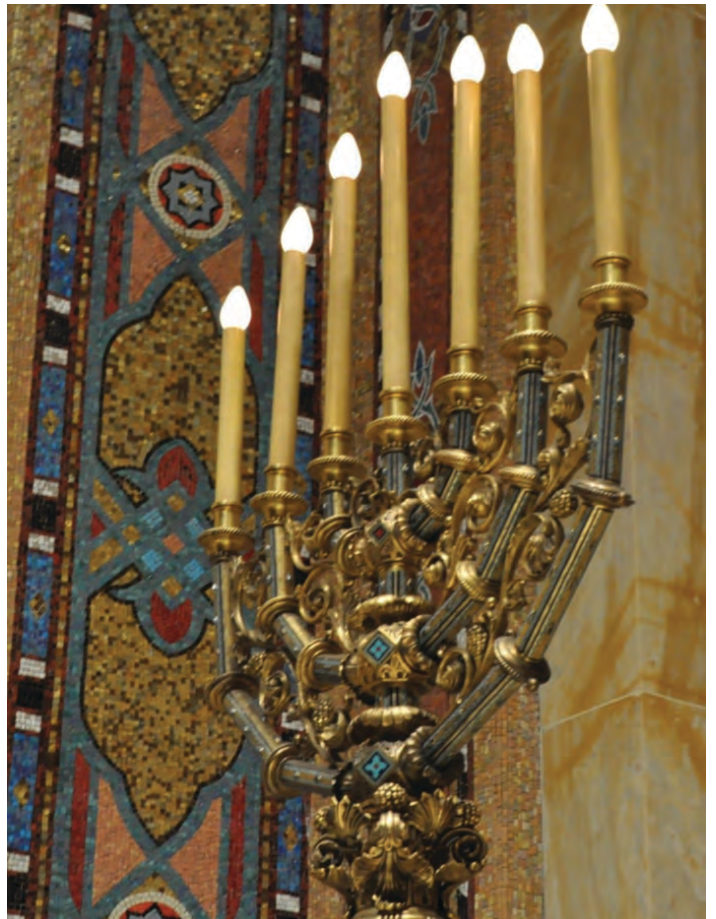
Leviticus, the book from which the portion Metzora comes from, discusses Jewish laws. One law described in Leviticus which we are all familiar with is that eating an animal which doesn't both chew cud and has a divided hoof is forbidden. The portion from which we read tonight explains the laws regarding treating those with skin afflictions. It teaches us that the Lord spoke to Moses saying, "this shall be the law of the person afflicted with tzara'ath, on the day of his cleansing: He shall be brought to the kohen. The kohen shall go outside the camp, and the kohen shall look, and behold, the lesion of tzara'ath has healed in the afflicted person. Then the kohen shall order, and the person to be cleansed shall take two live, clean birds, a cedar stick, a strip of crimson [wool], and hyssop."

If I were able to add my own law into the book of Leviticus, I would add that people should honor and follow beneficial traditions. It is important to realize that they may not seem beneficial at first but over time, their value is revealed. when God gave the Torah to the Israelites they said "We will do, and we will understand." Interestingly, they needed to do what they were told first, before understanding because sometimes we only understand things in hindsight. Whether it is within your family, Emanu-El, school, or work, tradition offers us a sense of continuity and builds a connection among those who are involved. Thankfully, my family's tradition of being contributing members to the temple community has helped me improve myself, set a positive example for others, and allowed my family to establish a great relationship with many great people. For all of the young people here tonight, you may have come for different reasons. Maybe your parents told you you have to. Maybe you wanted to see friends. Maybe you love to pray. No matter your motivation, I can guarantee that you will look back on your childhood here at Emanu-El and feel grateful that you were shaped by this community. I know that I am.

ORIGINAL ARTWORK

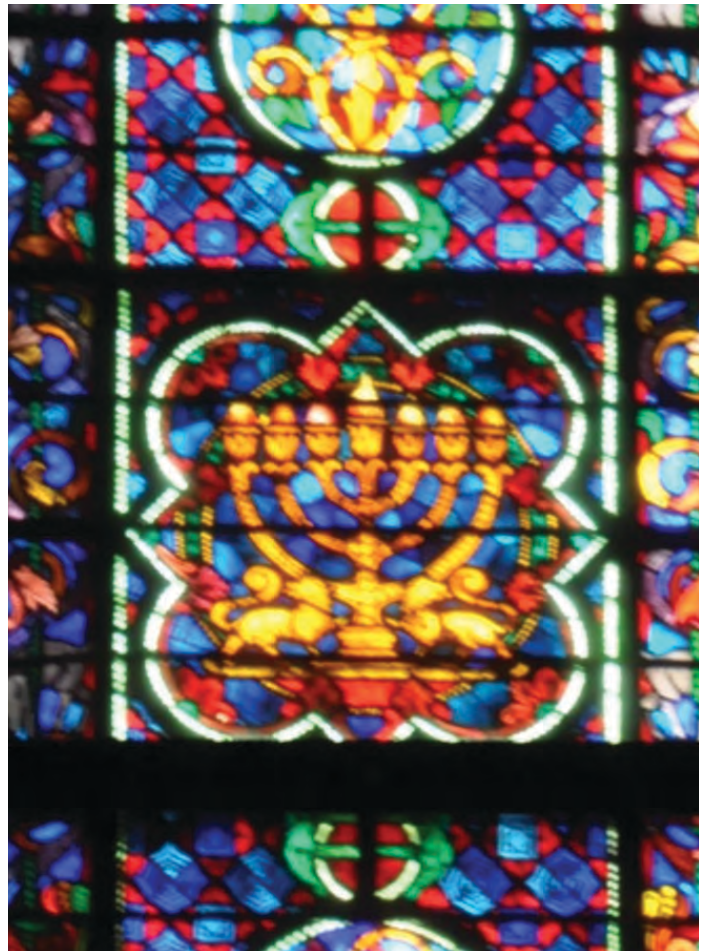
BY BENNET KULLA





PHOTOGRAPHY
BY SLOANE WACHS





CONGREGATION EMANU-EL OF THE CITY OF NEW YORK

Joshua M. Davidson, Senior Rabbi

Amy B. Ehrlich, Rabbi

Allison Tick Brill, Assistant Rabbi

Lance D. Rhodes, Interim Cantor

Stephanie Crawley, Rabbinic Intern

Toba Strauss Schaller, Rabbinic Intern

Richard Newman, Cantorial Intern

Dr. Ronald B. Sobel, Senior Rabbi Emeritus

Dr. David M. Posner, Senior Rabbi Emeritus

Lori A. Corrsin, Cantor Emerita

DEPARTMENT OF LIFELONG LEARNING 2015-16 (5776)

Saul Kaiserman, Director

Rachel Brumberg, Associate Director

Missy Bell, Program Director of Youth Learning and Engagement

Rabbi Rena Rifkin, Coordinator of Faculty and Family Engagement

Catherine Caceres, Department Administrator

GOLDSMITH RELIGIOUS SCHOOL BUILDING

10 East 66th Street, New York, NY 10065

MARVIN & ELISABETH CASSELL COMMUNITY HOUSE

One East 65th Street, New York, NY 10065 (212) 744-1400

www.emanuelnyc.org/school

www.facebook.com/emanuelnyc

www.youtube.com/emanuelnyc



COVER & LAYOUT DESIGN

BY ANDREA NAPCHAN

WWW.ANDREANAPCHAN.COM